

# GLAUNACH

## THE SILENCER HANDBOOK

### SILENCER ACCESSORIES

*CUSTOMISING SILENCERS TO SPECIFIC NEEDS*



© GLAUNACH GMBH 2010  
- ALL RIGHTS RESERVED -

## LIFTING LUGS

<i>purpose</i>	device transport and installation
<i>applicable to</i>	all products <i>all GLAUNACH products are by default equipped with suitable lifting lugs</i>
<i>design details</i>	typically manufactured from same grade material as the silencer shell (carbon steel or stainless steel)



## IDENTIFICATION PLATE

<i>purpose</i>	device identification and design information
<i>applicable to</i>	all products <i>all products are equipped with an ID plate by default</i>
<i>design details</i>	anodised aluminium <i>stainless steel plates are available at extra charge</i>



## PRESSURE GAUGE

<i>purpose</i>	standard connect port for pressure or temperature sensors for monitoring e.g. the silencer inlet
<i>applicable to</i>	all silencers <i>on customers request</i>
<i>design details</i>	1/2" BSW Whitworth thread, closed with a fitting plug  available in carbon steel or stainless steel



## DEWATERING PIPE

<i>purpose</i>	drainage for condensation and rainfall
<i>applicable to</i>	vent silencers <i>all GLAUNACH vent silencers are by default equipped with a suitable dewatering device</i>
<i>design details</i>	typically manufactured from same grade material as the silencer shell (carbon steel or stainless steel)



---

## EAVES RING

<i>purpose</i>	drip ring for diverting rain water away from the gas inlet connection point for external insulation
<i>applicable to</i>	vent silencers
<i>design details</i>	weld-on element, typically same grade material as the silencer shell (carbon steel or stainless steel)



---

## COLLAR SHEET

<i>purpose</i>	drip mould for draining rain water from the gas inlet connection point for external insulation
<i>applicable to</i>	in-roof vent silencer installations
<i>design details</i>	weld-on element, typically same grade material as the silencer shell (carbon steel or stainless steel)



## BRACKETS

<i>purpose</i>	support and fixation
<i>applicable to</i>	all products
<i>design details</i>	weld-on elements, typically same grade material as the shell (carbon steel or stainless steel)



## STANDS

<i>purpose</i>	support
<i>applicable to</i>	all products
<i>design details</i>	weld-on elements, typically same grade materials as the shell (carbon steel or stainless steel)



## GOOSE NECK

<i>purpose</i>	redirection of gas flow, e.g. away from a nearby wall
<i>applicable to</i>	vent silencers
<i>design details</i>	customised to application requirements and installation conditions  typically manufactured from same grade material as the silencer shell (carbon steel or stainless steel)



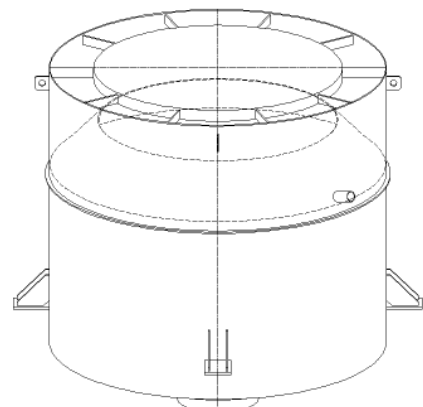
## WEATHER HOOD “RAIN & SNOW”

<i>purpose</i>	protection against ingress of precipitation (rainfall & snow)
<i>applicable to</i>	vent silencers
<i>design details</i>	hood typically manufactured from same grade material as the silencer shell (carbon steel or stainless steel); the inner surface of the weather hood is equipped with a noise absorbing layer to minimise noise emission



## WEATHER HOOD “RAIN, SNOW, SAND & DUST”

<i>purpose</i>	protection against ingress of precipitation (rainfall & snow) and air-borne particulate matter (sand & dust)
<i>applicable to</i>	vent silencers
<i>design details</i>	<p>hood with integrated dust trap, typically manufactured from same grade materials as the silencer shell (carbon steel or stainless steel)</p> <p><i>The hood comes equipped with a separate dewatering pipe for rinsing the dust trap, and is easily removable for maintenance.</i></p>



## OUTLET EXTENSION

<i>purpose</i>	extension of the silencer outlet
<i>applicable to</i>	vent silencers
<i>design details</i>	<p>customised to application requirements and installation conditions</p> <p>typically manufactured from same grade material as the silencer shell (carbon steel or stainless steel)</p>



## BIRD SCREEN

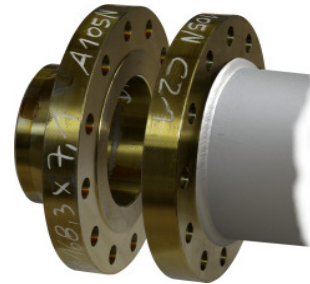
<i>purpose</i>	<p>preventing birds and other animals from nesting inside the silencer</p> <p><i>bird screens can also be used for operator protection and to prevent tools, etc. from dropping into the silencer</i></p>
<i>applicable to</i>	vent silencers
<i>design details</i>	<p>stainless steel grating covering the silencer outlets, either peripherally or axially</p> <p><i>NOTE: peripheral bird screens can only be used in combination with the "Rain &amp; Snow" weather hood</i></p>





## FLANGES

<i>purpose</i>	detachable connection of pipes
<i>applicable to</i>	all pipe connections <i>gas inlets, in-line silencer outlet, drains, etc.</i>
<i>design details</i>	according to customer requirements and applicable standards  <i>available as either single flange or flange kit (incl. nuts, bolts, gasket and 2<sup>nd</sup> flange)</i>



## MULTIPLE INLETS

<i>purpose</i>	muffling two or more lines with one silencer
<i>applicable to</i>	vent silencers
<i>design details</i>	customised to specific customer requirements; standard solutions include multiport direct diffuser inlets and dedicated collecting pipes



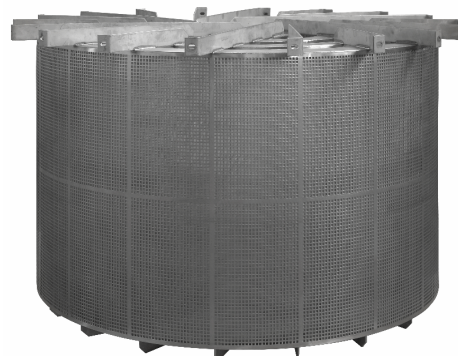
## EXCHANGEABLE DIFFUSER CARTRIDGE

<i>purpose</i>	replaceable diffuser for media containing particulate or aggressive matter, which may obstruct or corrode the diffuser stage over time
<i>applicable to</i>	diffuser silencers
<i>design details</i>	multi-layer wrapped finely woven stainless steel wire mesh in diffuser pipe cage



## ABSORBER

<i>purpose</i>	noise reduction by flow splitting and noise absorption
<i>applicable to</i>	vent silencers
<i>design details</i>	concentric circular baffle elements, composed of perforated stainless steel sheets encasing heat resistant long-strand glass fabrics and mineral wools absorbing mats



## HEATER

<i>purpose</i>	prevention of freezing of precipitation or condensate
<i>recommended accessory for:</i>	<ul style="list-style-type: none"> <li><input type="checkbox"/> regions with very low ambient temperatures</li> <li><input type="checkbox"/> applications, where no heat is transferred from the line to the silencer</li> </ul>

<i>applicable to</i>	vent silencers
----------------------	----------------

<i>design details</i>	easily replaceable stainless steel heating cartridge, mounted in a steel block welded to the silencer bottom; electrical connection clamps and thermostat are located in an aluminium shell affixed to the rear end of the heating cartridge
-----------------------	--

silencers up to 2 m external diameter require 200 W heating power; for larger sizes, the heating power should be increased to 400 W

*heater installation requires a 110 / 230 V AC connection; the installation of an additional operation control indicator in the control room is recommended*





## EXPANSION JOINTS

<i>purpose</i>	accommodating relative movement, caused e.g. by thermal expansion
<i>applicable to</i>	vent silencers in supported installations
<i>design details</i>	stainless steel pressurised or non-pressurised expansion joints



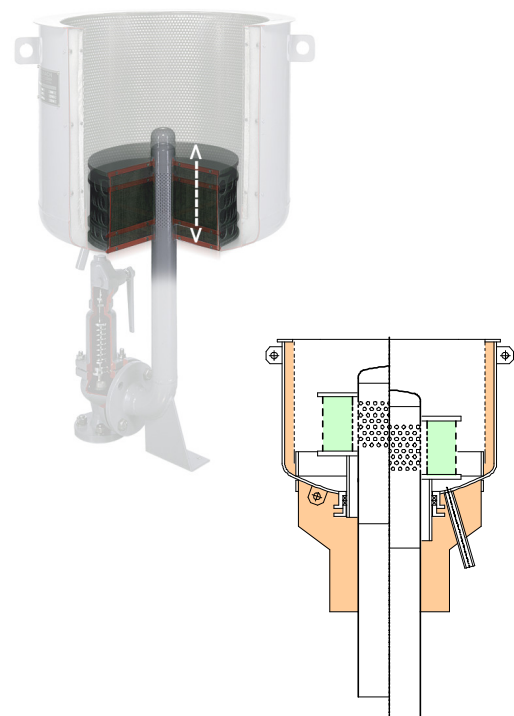
## SLIDING BRACKETS

<i>purpose</i>	accommodating horizontal movement, caused e.g. by thermal expansion
<i>applicable to</i>	vent silencers in supported installations
<i>design details</i>	modified steel brackets facilitating lateral movement



## SLIDING DIFFUSER

<i>purpose</i>	<input type="checkbox"/> accommodating vertical movement, e.g. due to thermal expansion <input type="checkbox"/> noise decoupling of solid-borne sound from upstream installation
<i>applicable to</i>	vent silencers in supported installations
<i>design details</i>	diffuser stage bedded in an adjustable gland seal, enabling reciprocating relative movement of diffuser stage and silencer shell

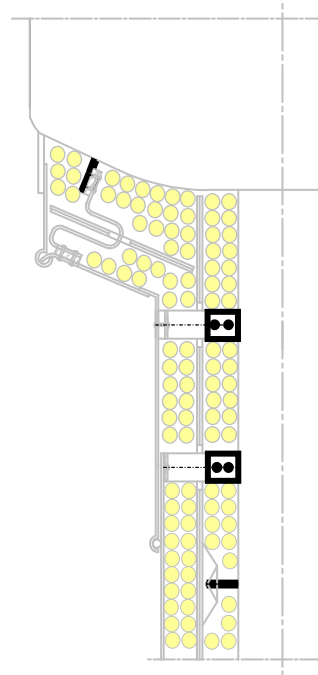
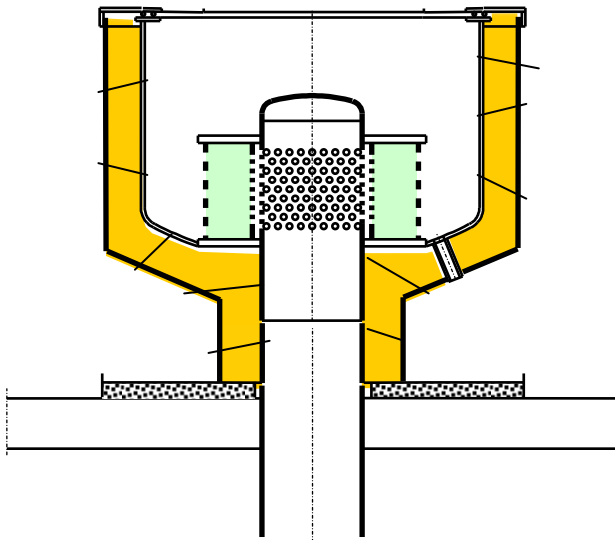


## INSULATION CLIPS

*purpose* fastening of supplementary  
thermal / acoustic mineral  
wool insulation

*applicable to* vent silencers

*design  
details* ☐ spikes <sup>1)</sup>  
☐ clamps <sup>1)</sup>



<sup>1)</sup> Please refer to Part VIII – *Insulation* of THE SILENCER HANDBOOK for more details.